

MDA Revit Space Naming Procedure

Version 1.0

December 13, 2024

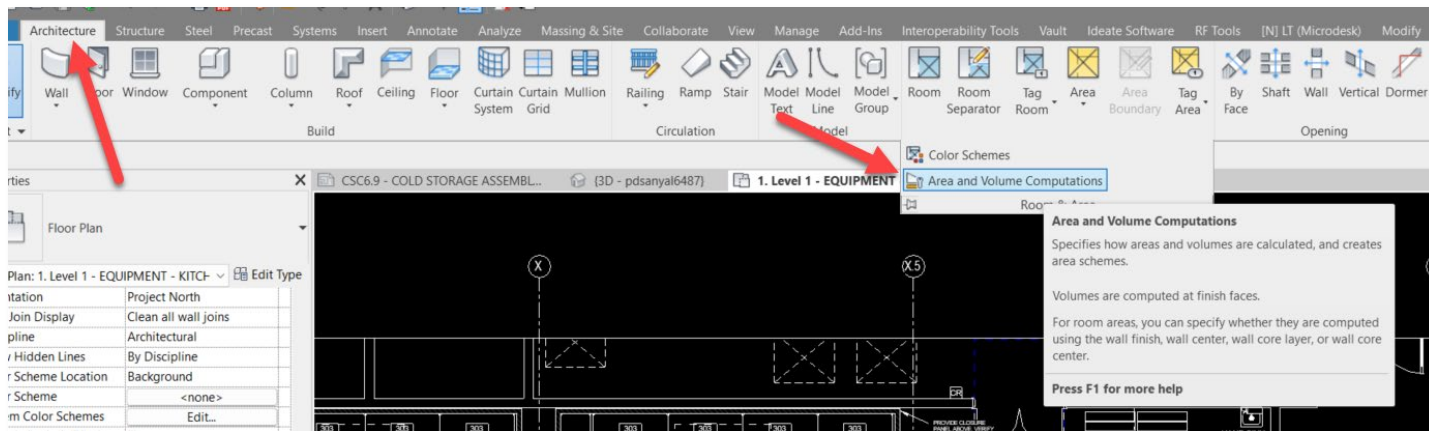
Step 1: Placing Spaces

It is imperative for design models to account for the rooms which reside in the Architectural model. This is done by using the Space functionality in Revit. For more information on Revit Spaces, please refer to the following [article](#).

***Before proceeding, please make sure to have the appropriate phase activated since Spaces will be modeled in the current phase**

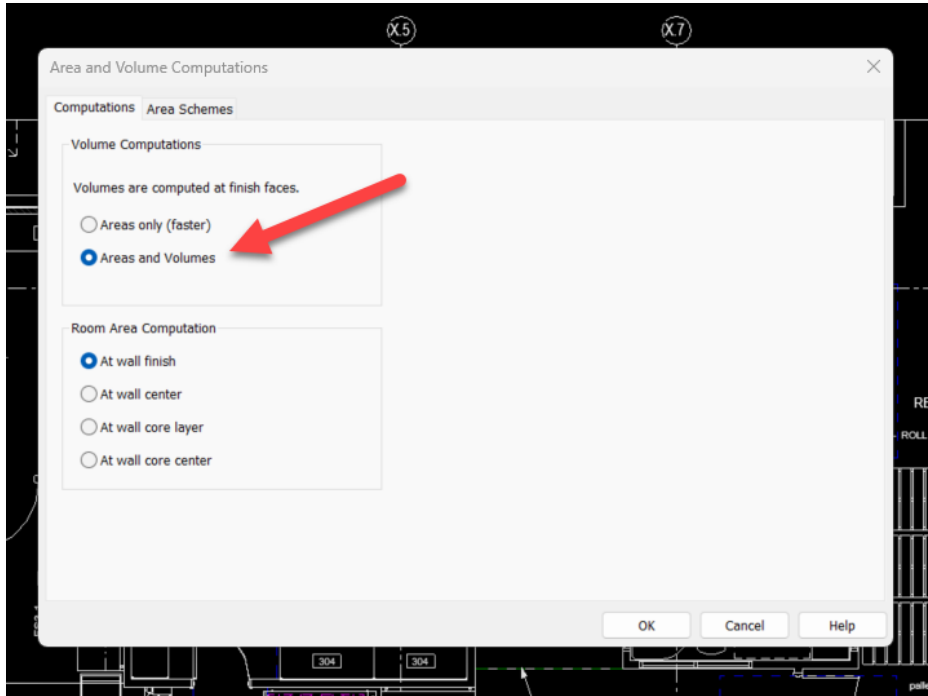


***Additionally, in the Ribbon go to Architecture, expand Room & Area, and select Area and Volume Computations**



Step 1: Placing Spaces

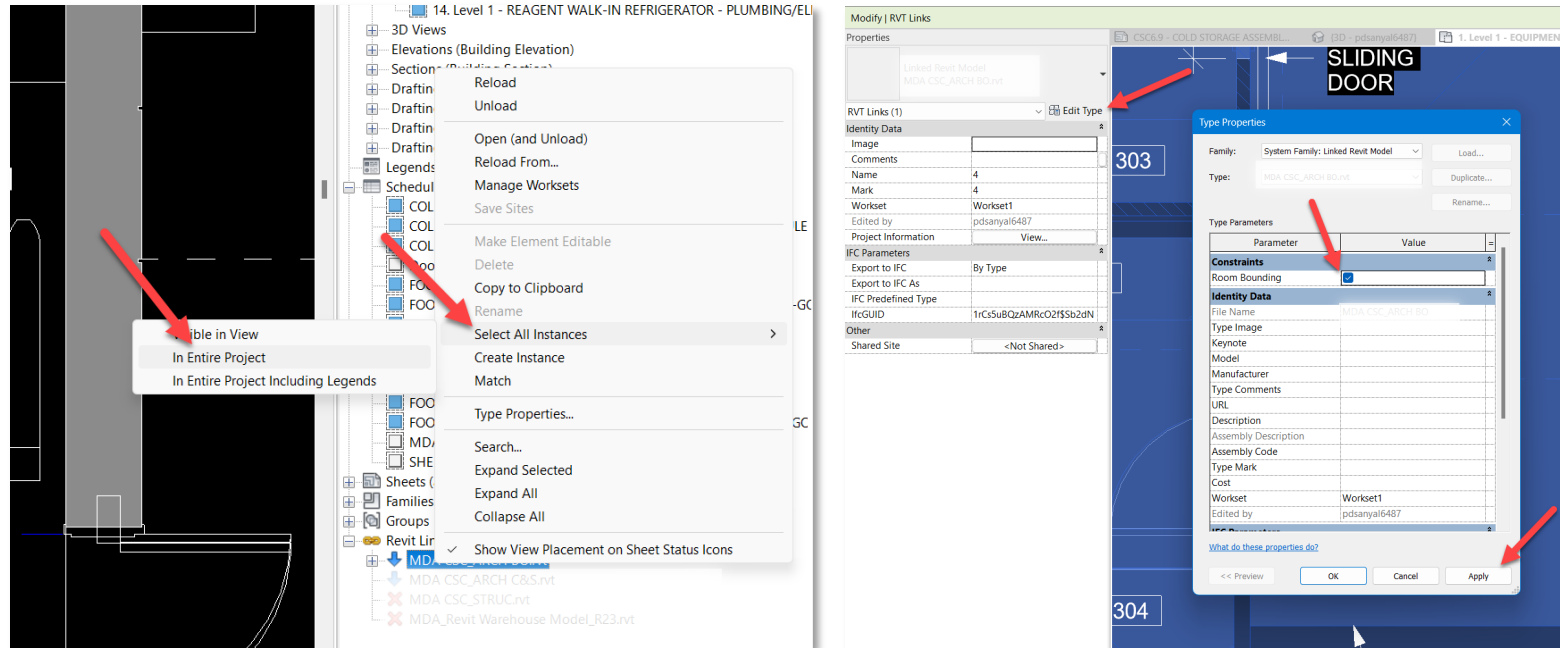
***Make sure “Areas and Volumes” is enabled**



Step 1: Placing Spaces

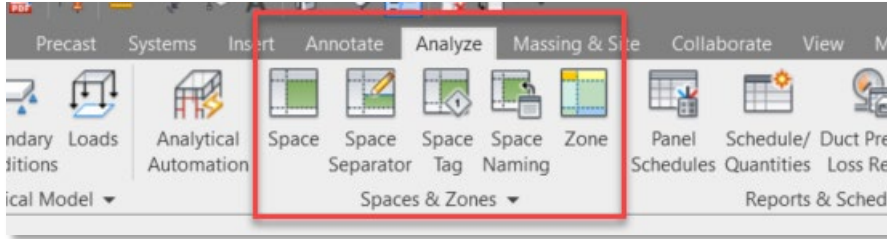
In the Project Browser, expand Revit Links and right click the Architecture link > Select All Instances > In Entire Project

With the Architecture link activated, go to the Properties palette, Edit Type, and make sure Room Bounding is enabled

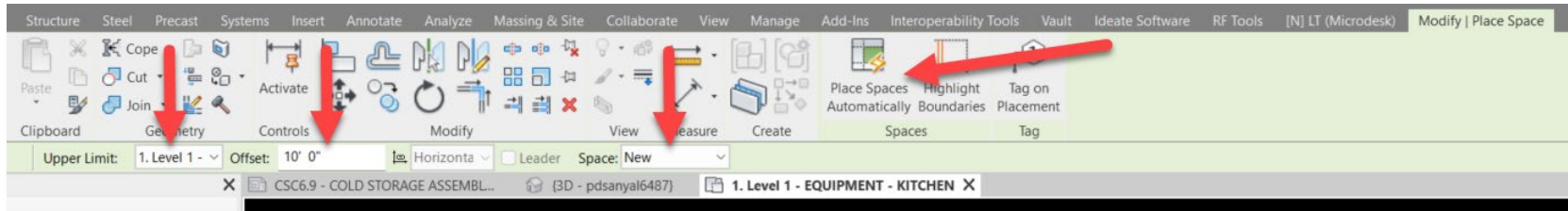


Step 1: Placing Spaces

Next, go to the Analyze tab in the Ribbon

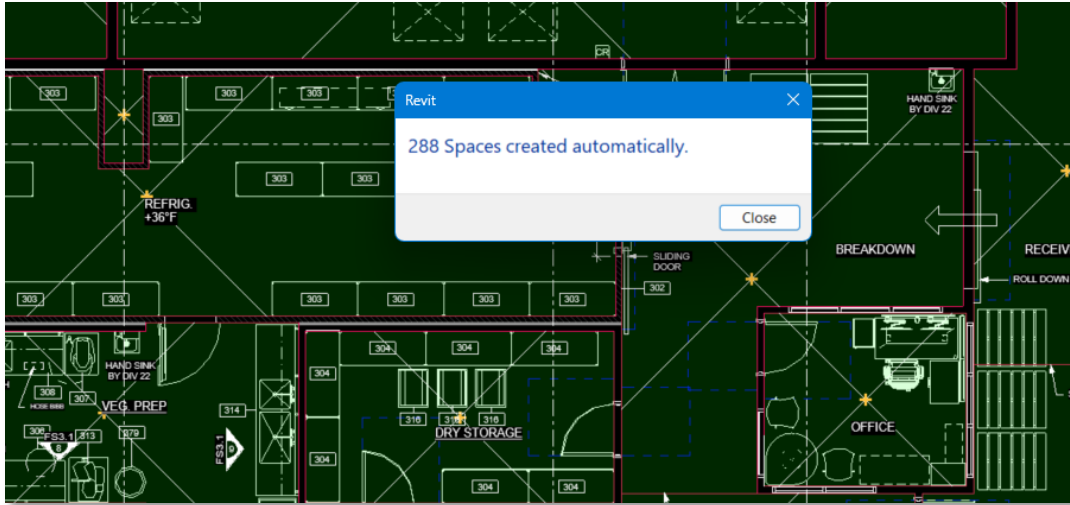


Select Space, specify the Upper Limit, Offset, and any miscellaneous items followed by Place Spaces Automatically



Step 1: Placing Spaces

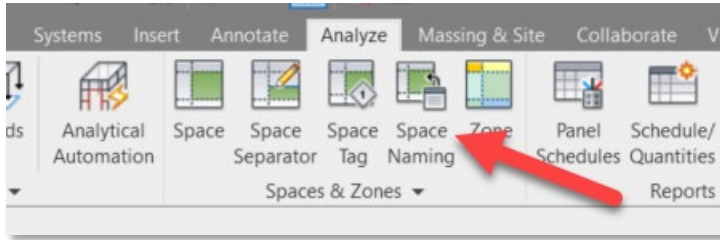
You will see a prompt that “## Spaces created automatically”



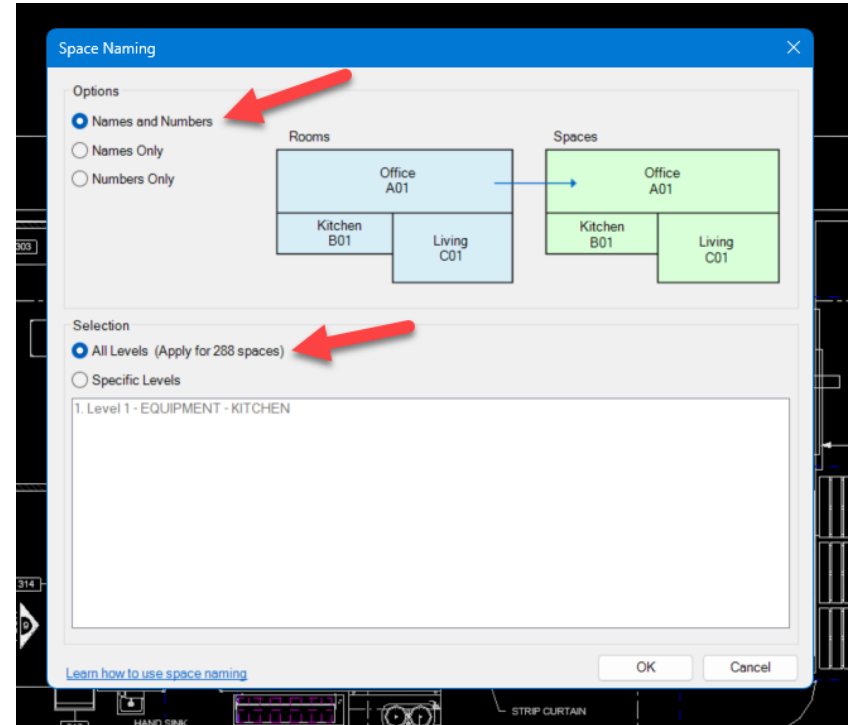
*Repeat this for all Levels and keep in mind Upper Limit and Offset will differ.

Step 2: Space Naming Utility

Once these Spaces are live in the model (*for every level), go back to the Ribbon, Analyze > Space Naming

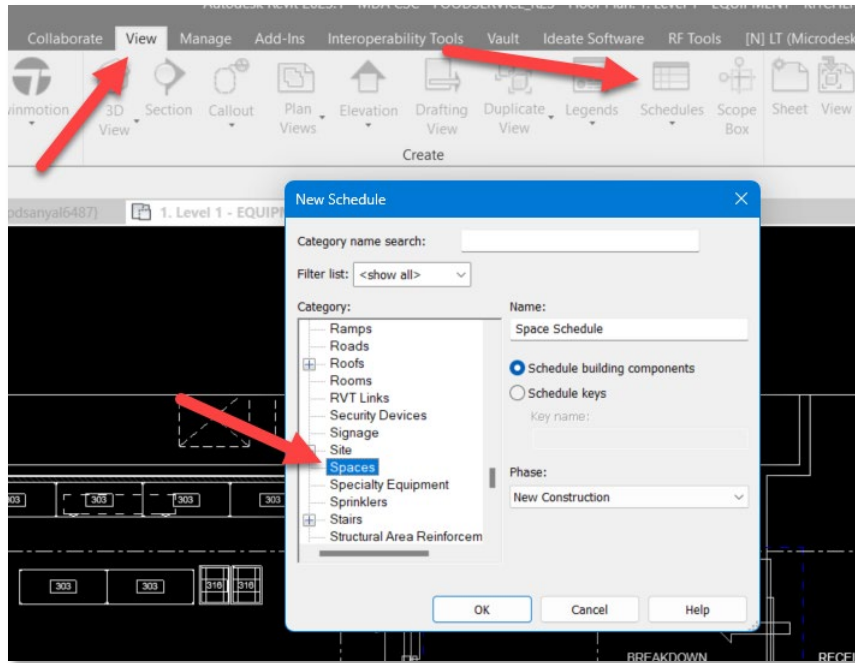


In the Space Naming dialog, enable Names and Numbers under Options and All Levels under Selection



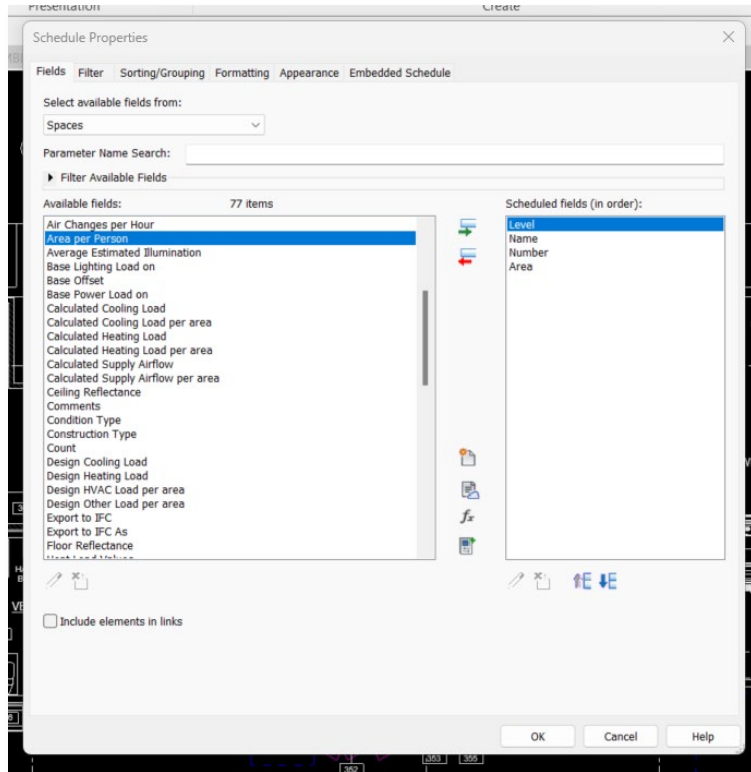
Step 3: Verifying Modeled Spaces

An easy way to verify that Spaces were modeled is through creating a Space Schedule. You can do so by going to View > Schedules, and select Spaces as the Category



Step 3: Verifying Modeled Spaces

In the Schedule Properties, bring in some available fields such as Level, Name, Number, and Area



Step 3: Verifying Modeled Spaces

In the Schedule Properties, bring in some available fields such as Level, Name, Number, and Area

An example of the resulting Space Schedule is shown below

Space Schedule X			
1. Level 1 - EQUIPMENT - KITCHEN	VESTIBULE-1	CSC1 1000-1	1 SF
1. Level 1 - EQUIPMENT - KITCHEN	VESTIBULE-2	CSC1 1000-2	239 SF
1. Level 1 - EQUIPMENT - KITCHEN	DOCK	CSC1 1510	730 SF
1. Level 1 - EQUIPMENT - KITCHEN	REFRIG.	CSC1 1530	712 SF
1. Level 1 - EQUIPMENT - KITCHEN	FREEZER	CSC1 1540	536 SF
1. Level 1 - EQUIPMENT - KITCHEN	RECEIVE	CSC1 1550	221 SF
1. Level 1 - EQUIPMENT - KITCHEN	HSKP.	CSC1 1550B	40 SF
1. Level 1 - EQUIPMENT - KITCHEN	CART WASH	CSC1 1550C	57 SF
1. Level 1 - EQUIPMENT - KITCHEN	BAKERY/DESSER	CSC1 1550D	705 SF
1. Level 1 - EQUIPMENT - KITCHEN	BLAST CHILLER	CSC1 1550E	25 SF
1. Level 1 - EQUIPMENT - KITCHEN	CAPKOLD COOLER	CSC1 1550F	166 SF
1. Level 1 - EQUIPMENT - KITCHEN	COLD HOLD REFRIG.	CSC1 1550G	320 SF
1. Level 1 - EQUIPMENT - KITCHEN	DRY STORAGE	CSC1 1550K	180 SF
1. Level 1 - EQUIPMENT - KITCHEN	VEG. PREP	CSC1 1550L	234 SF
1. Level 1 - EQUIPMENT - KITCHEN	MEAT PREP	CSC1 1550M	165 SF
1. Level 1 - EQUIPMENT - KITCHEN	HSKP.	CSC1 1550N	20 SF
1. Level 1 - EQUIPMENT - KITCHEN	COOK	CSC1 1550P	788 SF
1. Level 1 - EQUIPMENT - KITCHEN	SPD 19,143-1	WSP1 2342-1	106 SF
1. Level 1 - EQUIPMENT - KITCHEN	SPD 19,143-2	WSP1 2342-2	106 SF
1. Level 1 - EQUIPMENT - KITCHEN	SPD 19,143-3	WSP1 2342-3	10 SF
1. Level 1 - EQUIPMENT - KITCHEN	SPD 19,143-4	WSP1 2342-4	163 SF
1. Level 1 - EQUIPMENT - KITCHEN	SPD 19,143-5	WSP1 2342-5	82 SF
1. Level 1 - EQUIPMENT - KITCHEN	SPD 19,143-6	WSP1 2342-6	9 SF
1. Level 1 - EQUIPMENT - KITCHEN	SPD 19,143-7	WSP1 2342-7	163 SF
1. Level 1 - EQUIPMENT - KITCHEN	SPD 19,143-8	WSP1 2342-8	79 SF
1. Level 1 - EQUIPMENT - KITCHEN	SPD 19,143-9	WSP1 2342-9	8 SF
1. Level 1 - EQUIPMENT - KITCHEN	SPD 19,143-10	WSP1 2342-10	67 SF
1. Level 1 - EQUIPMENT - KITCHEN	SPD 19,143-11	WSP1 2342-11	78 SF
1. Level 1 - EQUIPMENT - KITCHEN	SPD 19,143-12	WSP1 2342-12	491 SF
1. Level 1 - EQUIPMENT - KITCHEN	SPD 19,143-13	WSP1 2342-13	176 SF
1. Level 1 - EQUIPMENT - KITCHEN	SPD 19,143-14	WSP1 2342-14	7244 SF
1. Level 1 - EQUIPMENT - KITCHEN	SPD 19,143-15	WSP1 2342-15	191 SF
1. Level 1 - EQUIPMENT - KITCHEN	SPD 19,143-16	WSP1 2342-16	118 SF
1. Level 1 - EQUIPMENT - KITCHEN	SPD 19,143-17	WSP1 2342-17	14 SF
1. Level 1 - EQUIPMENT - KITCHEN	SPD 19,143-18	WSP1 2342-18	141 SF

THE UNIVERSITY OF TEXAS

MDAnderson
~~Cancer~~ Center

Making Cancer History®