

Endometrial Cancer Screening

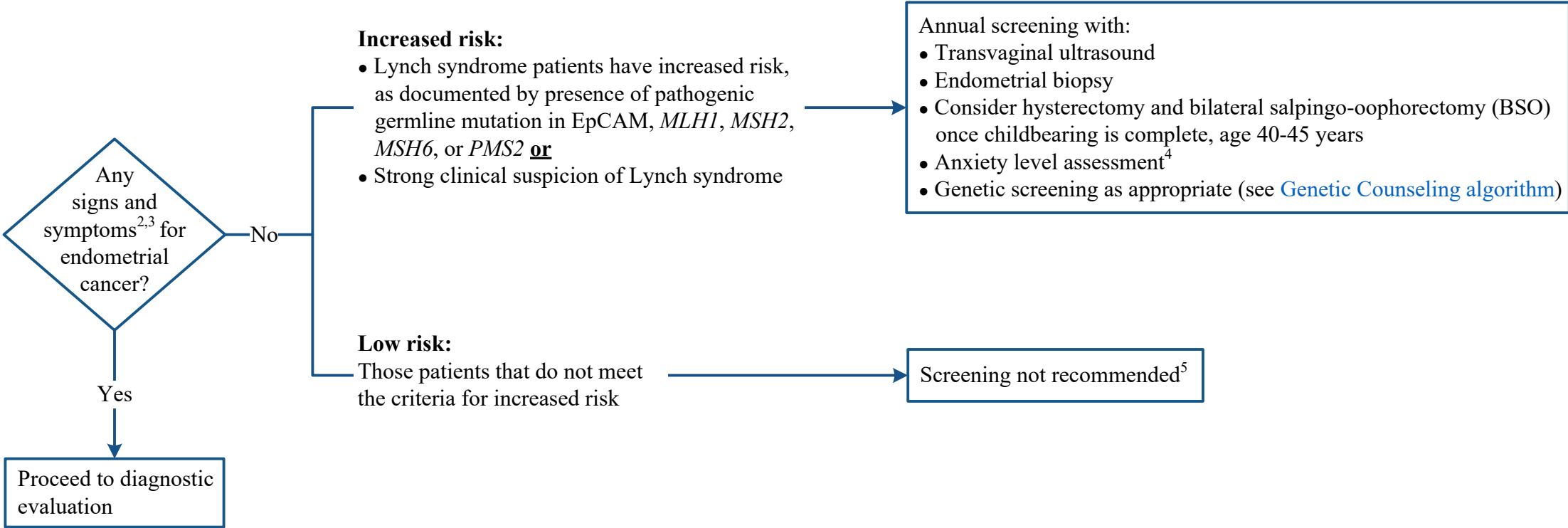
Disclaimer: This algorithm has been developed for MD Anderson using a multidisciplinary approach considering circumstances particular to MD Anderson's specific patient population, services and structure, and clinical information. This is not intended to replace the independent medical or professional judgment of physicians or other health care providers in the context of individual clinical circumstances to determine a patient's care. This algorithm should not be used to treat pregnant women.

Note: Screening is only intended for asymptomatic individuals. Patient must be a candidate for and is willing to undergo curative treatment. Endometrial cancer screening may continue as long as a woman has a 10-year life expectancy and no comorbidities that would limit the diagnostic evaluation or treatment of any identified problem. This algorithm is not intended for patients with a personal history of endometrial cancer¹. For transgender men assigned female at birth, determine if uterus remains intact.

PRESENTATION

RISK

SCREENING



¹ See the [Endometrial Cancer](#) or [Survivorship - Endometrial Cancer](#) algorithms for the management of women with a personal history of endometrial cancer

² Signs and symptoms include:

- Vaginal discharge
- Abnormal uterine bleeding, such as intermenstrual bleeding or postmenopausal bleeding

³ Patients should have any gynecological symptoms promptly evaluated

⁴ If moderate to severe anxiety related to screening results is identified, refer to Social Work for psychiatric evaluation and/or counseling

⁵ While it is recognized that women who are overweight/obese, taking tamoxifen, or with a prior history of pelvic radiation are at increased risk of endometrial cancer, screening is not recommended for these populations

Disclaimer: *This algorithm has been developed for MD Anderson using a multidisciplinary approach considering circumstances particular to MD Anderson's specific patient population, services and structure, and clinical information. This is not intended to replace the independent medical or professional judgment of physicians or other health care providers in the context of individual clinical circumstances to determine a patient's care. This algorithm should not be used to treat pregnant women.*

SUGGESTED READINGS

- ACOG Committee Opinion. (2003). Routine cancer screening. *International Journal of Gynecologic and Obstetrics*, 82(2), 241-245. [https://doi.org/10.1016/S0020-7292\(03\)00278-9](https://doi.org/10.1016/S0020-7292(03)00278-9)
- Barakat, R. R., Gilewski, T. A., Almadrones, L., Saigo, P. E., Venkatraman, E., Hudis, C., & Hoskins, W. J. (2000). Effect of adjuvant tamoxifen on the endometrium in women with breast cancer: A prospective study using office endometrial biopsy. *Journal of Clinical Oncology*, 18(20), 3459-3463. <https://doi.org/10.1200/JCO.2000.18.20.3459>
- Gerber, B., Krause, A., Müller, H., Reimer, T., Külz, T., Makovitzky, J., . . . Friese, K. (2000). Effects of adjuvant tamoxifen on the endometrium in postmenopausal women with breast cancer: A prospective long-term study using transvaginal ultrasound. *Journal of Clinical Oncology*, 18(20), 3464-3470. <https://doi.org/10.1200/JCO.2000.18.20.3464>
- Lindor, N. M., Petersen, G. M., Hadley, D. W., Kinney, A. Y., Miesfeldt, S., Lu, K. H., . . . Press, N. (2006). Recommendations for the care of individuals with an inherited predisposition to Lynch syndrome: A systematic review. *Journal of the American Medical Association*, 296(12), 1507-1517. <https://doi.org/10.1001/jama.296.12.1507>
- National Comprehensive Cancer Network. (2023). *Genetic/Familial High-Risk Assessment: Colorectal* (NCCN Guideline Version 2.2023). Retrieved from https://www.nccn.org/professionals/physician_gls/pdf/genetics_colon.pdf
- National Comprehensive Cancer Network. (2024). *Uterine Neoplasms* (NCCN Guideline Version 1.2024). Retrieved from https://www.nccn.org/professionals/physician_gls/pdf/uterine.pdf

Disclaimer: *This algorithm has been developed for MD Anderson using a multidisciplinary approach considering circumstances particular to MD Anderson's specific patient population, services and structure, and clinical information. This is not intended to replace the independent medical or professional judgment of physicians or other health care providers in the context of individual clinical circumstances to determine a patient's care. This algorithm should not be used to treat pregnant women.*

DEVELOPMENT CREDITS

This screening algorithm is based on majority expert opinion of the Endometrial Cancer Screening workgroup at the University of Texas MD Anderson Cancer Center. It was developed using a multidisciplinary approach that included input from the following:

Core Development Team Leads

Therese Bevers, MD (Cancer Prevention)
Ana Nelson, DNP, APRN, FNP-BC (Cancer Prevention)
Shannon Westin, MD (Gynecologic Oncology & Reproductive Medicine)

Workgroup Members

Heather Alexander Dahl, PgDip, BA (Cause Alliances)
Joyce Dains, DrPH, JD, RN, FNP-BC, FNAP, FAANP (Nursing)
Molly Daniels, MS, CGC (Cancer Genetics)
Wendy Garcia, BS♦
Ernest Hawk, MD (Cancer Prevention)
Denise Nebgen, MD, PhD (Gynecologic Oncology & Reproductive Medicine)
Lois Ramondetta, MD (Gynecologic Oncology & Reproductive Medicine)
Eduardo Vilar Sanchez, MD, PhD (Cancer Prevention)
Hannah Warr, MSN, RN, CPHON♦

♦Clinical Effectiveness Development Team