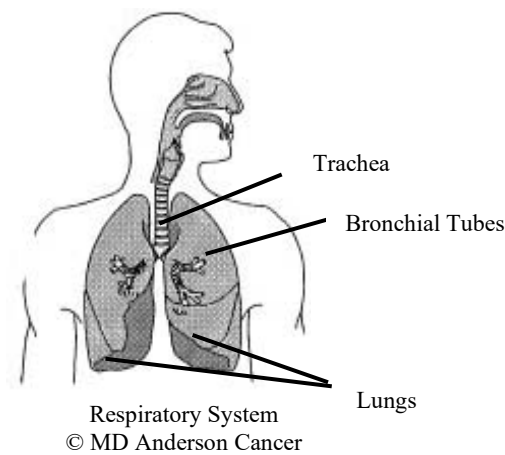


Bronchoscopy

A bronchoscopy is a procedure that allows your doctor to view your airways, which includes the:

- Windpipe (trachea)
- Large air tubes leading to the lungs (bronchi)
- Lungs

A flexible tube, called a bronchoscope, is inserted through your nose or mouth and down into the airways. A tissue sample, called a biopsy, is collected for analysis.



A bronchoscope is used to:

- Identify lung problems.
- Remove blockages from the airways.
- Obtain a biopsy or needle aspiration of cells, pieces of tissues or fluid for diagnose
- See how well the area has healed after treatment.

Preparation

- You will meet with a member of your health care team. You will have an opportunity to ask questions or address any concerns.
- You will be asked to sign a consent form.
- If you are not a candidate for conscious sedation based on your medical history or physical exam, you may be referred to anesthesia for a consultation.
- **Do not** eat or drink anything after midnight before your procedure.
- You must have a responsible adult come with you on the day of your procedure. You may not drive yourself home after the procedure.
- Let your doctor know if you are taking blood thinning medicines, such as Coumadin®. You may need to stop taking them before your procedure.
- **Do not** smoke before the procedure. Smoking increases the amount of throat irritation.
- You will stay in the hospital for 2 hours after the procedure.
- You may take medicines approved by your doctor with sips of water the morning of your procedure.
- Tell your doctor about all the medicines you are taking including any over-the-counter medicines and supplements.




Procedure

- A nurse will give you a call the day before your procedure to let you know your appointment time and check-in time. Check-in time is usually 1 hour before your procedure.

- If the nurse is unable to contact you, they will send a message to your MyChart account with the procedure time and check in time. Arrive 1 hour before your procedure.
- The nurse will complete an assessment.
- You will change into a hospital gown.
- Remove your dentures if you wear them.
- An intravenous (IV) line is placed in your hand or arm. Medicine is given through the IV to make you sleepy and comfortable.
- Your vital signs are monitored.
- Medicine is sprayed to numb the inside of your nose, tongue and throat.
- The doctor will insert the bronchoscope through your nose or mouth. As the tube passes down your throat, it may cause you to cough.
- Oxygen is given to help you breathe.
- Medicine is given through the tube to help relax your airways.
- The procedure will take about 45 minutes to complete.

After the Procedure

- You will be taken to a recovery area.
- You are **not** allowed to eat or drink anything 2 hours after the procedure.
- **Do not** drive or operate heavy machinery until the day after the procedure.
- You must have a responsible adult drive you home after the procedure.
-  **Do not** smoke for at least 2 hours after the procedure. Smoking causes throat irritation.
- Tell your doctor if you have chest pain, or if breathing becomes painful or difficult.
- Ask your doctor when to resume taking your blood thinning medicine.
- Notify your nurse or doctor if you have a fever of 101.4° F (38° C) or higher.
- Mild soreness and hoarseness in your throat can occur.
- You may see small specks of blood in your mouth or sputum (saliva, or coughed up mucus) for a short period. Although this is normal, tell your doctor or nurse right away if the amount of blood increases.
- You may return to your normal activities the day after the procedure.
- Results of the tissue samples taken during the procedure take 48 to 72 hours to process. However, some test may take up to 8 weeks to complete. Make arrangements with your doctor to review your test results.
- Go to the nearest hospital emergency center or call 911 for any urgent medical issues.

If you have any problems or questions, call the Cardiopulmonary Center at 713-792-4015.

Weekdays after 5 p.m., weekends and holidays, call the MD Anderson Acute Cancer Care Center. The MD Anderson Acute Cancer Care Center is open 24 hours a day, every day.

Cardiopulmonary Center

Main Building, Floor 6, near Elevator C
Monday through Friday, 8 a.m. to 5 p.m.
713-792-4015